

Features

- ADTPX 850/1850/2650-A composed of Cavity Triplexer.
- Low Insertion Loss
- Very compact size and low weight.



Electrical Specifications

Parameter	Band 850	Band 1850	Band 2650	Remark
	J1	J2	J3	
Frequency Range [MHz]	750 ~ 960	1,800 ~ 1,900	2,600 ~ 2,700	
Center Frequency [MHz]	855	1,850	2,650	
Bandwidth [MHz]	210	100	100	
Insertion Loss	0.5 dB Max.			
Pass Band Ripple	0.3 dB Max.			
Return Loss	15.0 dB Min.	18.0 dB Min.	15.0 dB Min.	
Attenuation	750 ~ 960 MHz	-	20.0 dB Min.	20.0 dB Min.
	1,800 ~ 1,900 MHz	20.0 dB Min.	-	20.0 dB Min.
	2,600 ~ 2,700 MHz	20.0 dB Min.	20.0 dB Min.	-
Power Handling	150 W Max. (TX Port 50 W Max.)			
Impedance	50 Ω			
Operating Temp.	-40 °C ~ + 85 °C			

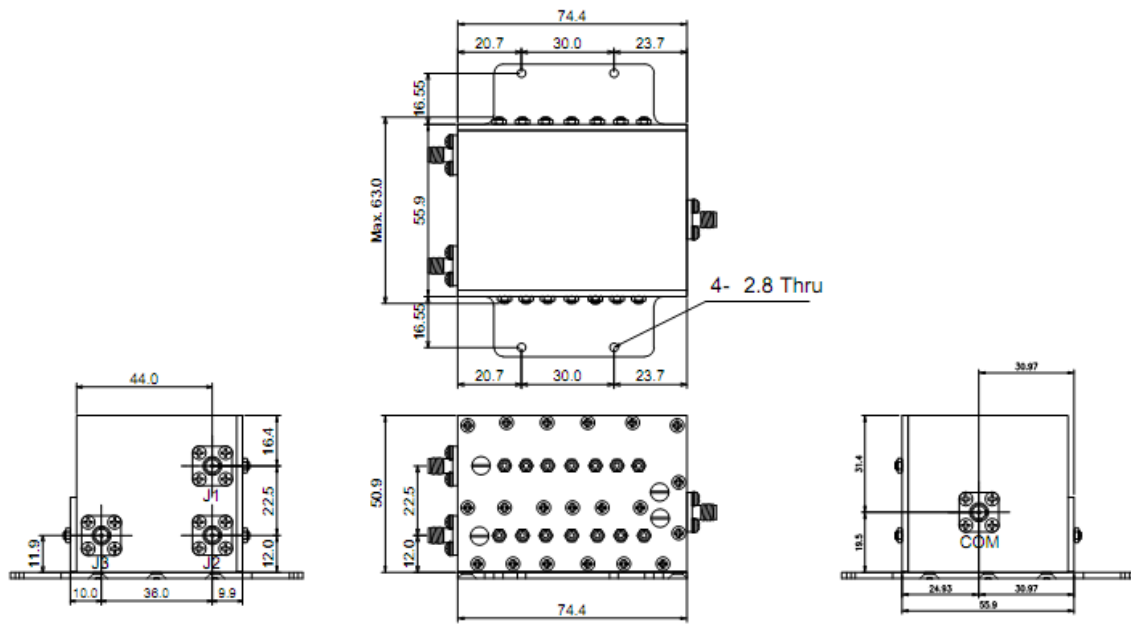
Mechanical

Dimensions ¹⁾	74.4 x 63 x 51 mm
Weight ²⁾	410 g Max.
RF Connector	SMA Female

1) Excluding connectors and Bracket

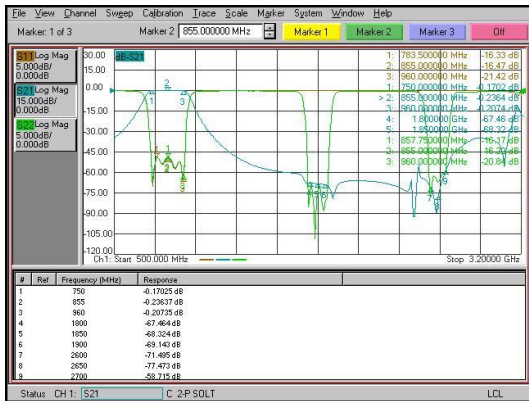
2) Including Bracket

Outline Drawing

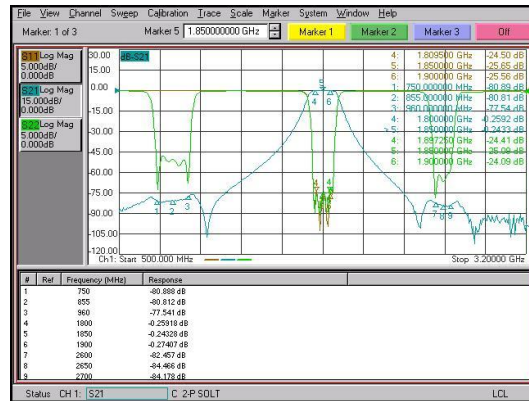


Units : mm, Tolerance : +/- 0.2 mm

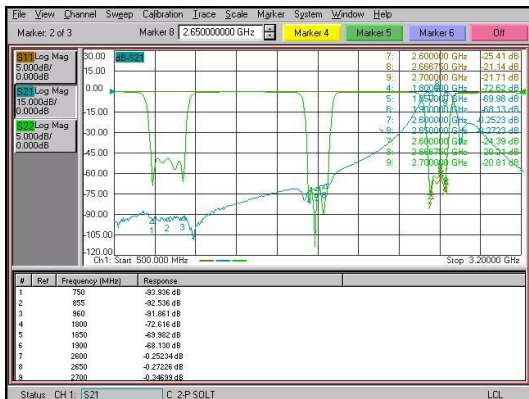
Typical Response



Band 850



Band 1850



Band 2650